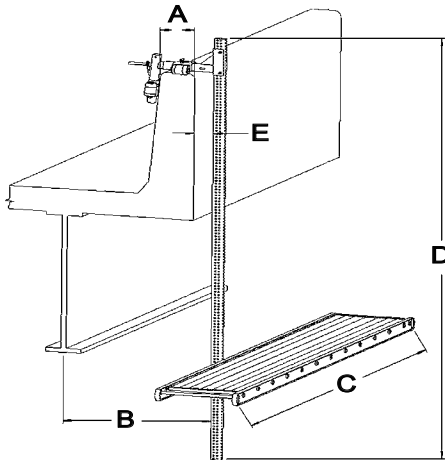


parapet scaffold considerations

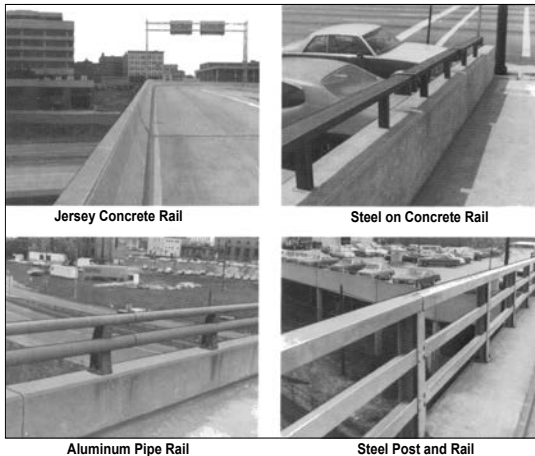


When considering a Parapet Scaffold application, dimensions A, B, C, D, and E are critical in determining the appropriate model.

The Parapet Scaffold is adaptable to most bridge rail or parapet. The standard Upper Head Assembly will fit up to a fourteen and one-half inch concrete parapet **A** and up to thirty-six inches and more on other models. The Upper Head Assembly can also adapt to a four-inch diameter and larger pipe rail. As in every case, a competent person must determine whether the structure is sufficiently strong to carry the live and dead loads.

The Horizontal Bumper allows for up to five feet horizontal support **B**. The Horizontal Bumper allows for two types of support. The first application is to support the platform and the vertical stem at the web of the girder. The second application allows for multiple platforms when the horizontal support is attached to the bottom flange of the girder.

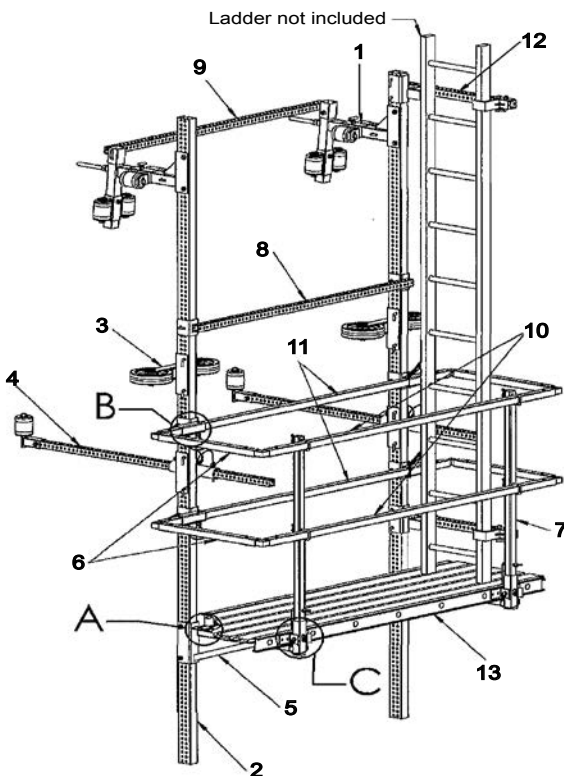
typical rails and parapet designs



The platform lengths **C** are seven feet and twelve feet. Only twenty-four inch width is provided. At the time of determining the number of decks required, please indicate how far under the sidewalk you would need to access.

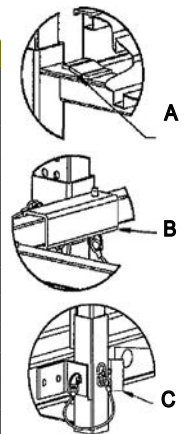
Letter **D** specifies the length of the vertical stems. When considering the length of the vertical stem, you must determine the deck elevation. Typically, two to four feet is subtracted from the vertical length, because of the stage bracket. The length of the vertical stem is provided in 10, 12, and 16 ft. options; however, stems are available to 24 ft.

Finally, consideration should be given to any obstruction such as, water pipe lines, cable lines, etc. along the bottom face of the parapet **E**. In cases where these obstructions exist, a different Upper Head Assembly may be specified, along with a Stand-off pad for the Lower Wheel Assembly (SL-15LAS).

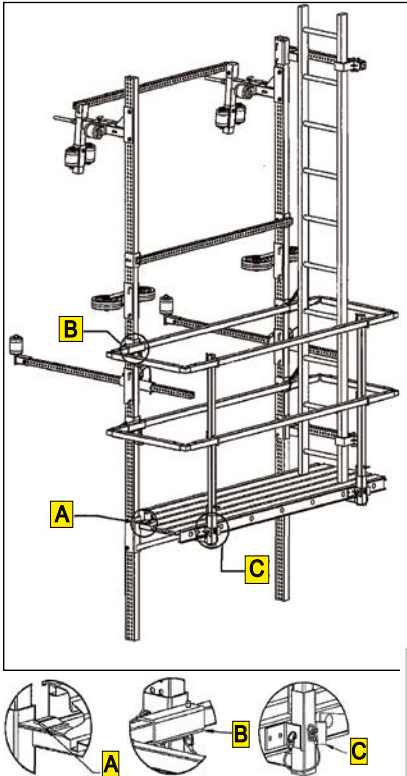


The SL-15 series Parapet Scaffold comes in two sizes: 7 ft. and 12 ft. both offer a two foot-wide aluminum platform; however, several configurations are available. The perforated vertical stem provides adjustment of the deck height. Electro-plated steel upper assembly locks into position on most types of rails. Rollers allow you to move the scaffold along the parapet or rail with ease.

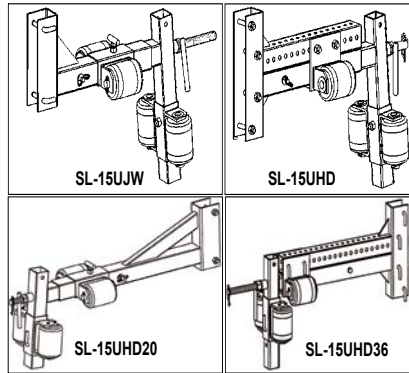
legend	
1	Upper Head Wheel Assembly
2	Vertical Stem
3	Adjustable Mid Wheel Assembly
4	Horizontal Brace w/Rotating Vertical Rollers
5	Stage Bracket w/Board Lock/Locking Clip (DETAIL A)
6	Aluminum Endrails w/connectors (DETAIL B)
7	Aluminum Guardrail Post w/post connector (DETAIL C)
8	Channel Brace
9	Tubing Brace
10	Aluminum Guardrail
11	Aluminum Guardrail (access to interior)
12	Ladder Clamp
13	Aluminum Stage



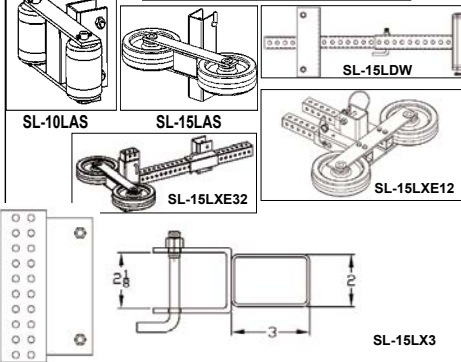
parapet scaffold components



upper head assemblies



adjustable mid-wheel assemblies



upper head assemblies	
SL-15UJW	Standard Upper Head Assembly w/wheels - 14 1/2"
SL-15UHD	Heavy Duty Upper Head Assembly w/wheels - 17 1/2"
SL-15UHD20	Heavy Duty Upper Head Assembly w/wheels - 20"
SL-15UHD36	Heavy Duty Upper Head Assembly w/wheels - 36"

adjustable mid-wheel assemblies	
SL-10LAS	3 1/4" x 4" Double Mid Wheel Assembly
SL-15LAS	2" x 8" Double Mid Wheel Assembly
SL-15LDW	2" x 6" Double Mid Wheel Assembly
SL-15LXE12	2" X 8" Adjustable (6"-12") HD Double Mid-Wheel Assem
SL-15LXE32	2" x 8" Adjustable (6"-32") Double Mid-Wheel Assembly
SL-15LX3	3" Single Mid-Wheel Extension
SL-15LX7	2" x 8" Adjustable (6"-32") Double Mid-Wheel Assembly

perforated vertical stems	
SL-7012	2" X 3" Vertical Perforated Stem 12'
SL-7016	2" X 3" Vertical Perforated Stem 16'
SL-7512	2" X 6" Vertical Perforated Stem 12'
SL-7516	2" X 6" Vertical Perforated Stem 16'

horizontal braces	
SL-15AB059T	1 1/2" Sq. x 5' Tubing Brace
SL-15AB059C	1 1/2" Sq. x 5' Channel Brace
SL-15AB120T	1 1/2" Sq. x 10' Tubing Brace
SL-15AB120C	1 1/2" Sq. x 10' Channel Brace

horizontal bumper supports	
SL-15CVR	Support with 2 each 3 1/4" x 4" V-Rollers, 5' Stem
SL-15CVS	Support with 2 each 3 1/4" x 4" V-Rollers, 6' Stem

aluminum stages	
SL-D2407	2 Ft. x 7 Ft. Aluminum Stage (2 Man)
SL-D2412	2 Ft. x 12 Ft. Aluminum Stage (2 Man)

stage brackets	
SL-24SB	2 Ft. Stage Bracket
SL-24SBB	2 Ft. Stage Bracket w/Clip Lock
SL-48SB	4 Ft. Stage Bracket
SL-72SB	6 Ft. Stage Bracket

guardrails	
SL-GR0800	1 1/2" Sq. X 80" Aluminum Guardrail
SL-GR0610B	1 1/2" Sq. X 61" Aluminum Guardrail
SL-GR1410	1 1/2" Sq. X 141" Aluminum Guardrail
SL-GR1220B	1 1/2" Sq. X 122" Aluminum Guardrail

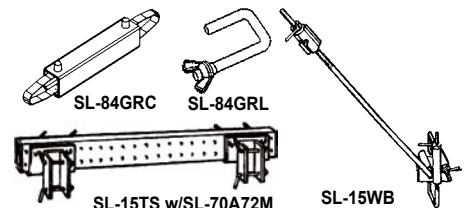
endrails	
SL-24ERL	Endrail 2 Ft., W/15ERL6
SL-48ERL	Endrail 4 Ft., W/15ERL6
SL-72ERL	Endrail 6 Ft., W/15ERL6

guardrail posts	
SL-15GRP	1 1/2" Sq. X 48" Aluminum Guardrail Post
SL-71B48M	1 1/2" Sq. X 48" Perf. Steel Guardrail Post
SL-15GRPA	1 1/2" Sq. X 48" Aluminum Guardrail Post

ladder clamps	
SL-64A	Pipe Ladder Clamp
SL-64D	Side-Mounted Ladder Clamp
SL-64LC	Concrete Parapet Ladder Clamp

wrap-around parapet scaffold components	
SL-15TS	Vertical Stem to Truss Connector
SL-70A72M	2" X 3" X 72" Wrap-Around Truss
SL-15WB	Wrap-Around Scaffold Diagonal Brace

wrap-around parapet scaffold components



vertical stems	horizontal braces	horizontal bumper supports	stage brackets
<p>SL-70 SERIES (2X3) SL-75 SERIES (2X6) SL-76 SERIES (3X6)</p>	<p>SL-15AB059T SL-15AB059C</p>	<p>SL-15CVR</p>	<p>SL-24SB</p>
	<p>SL-15ERL6</p>	<p>SL-D2412</p>	<p>SL-15GRP</p>

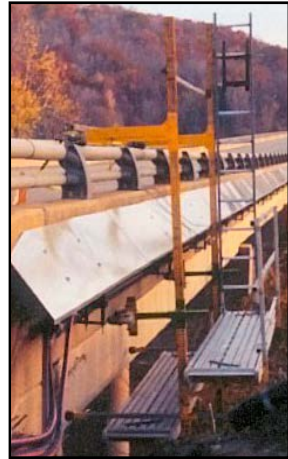
ladder clamps		
<p>SL-64A</p>	<p>SL-64D</p>	<p>SL-64LC</p>



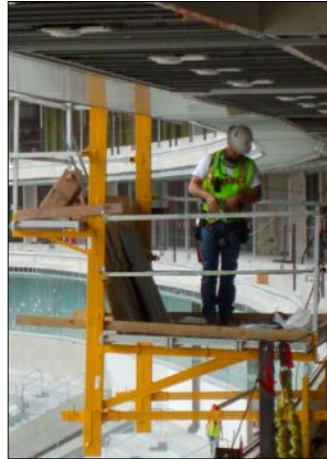
parapet scaffold models



SL-15A12D20



SL-15AA12D22



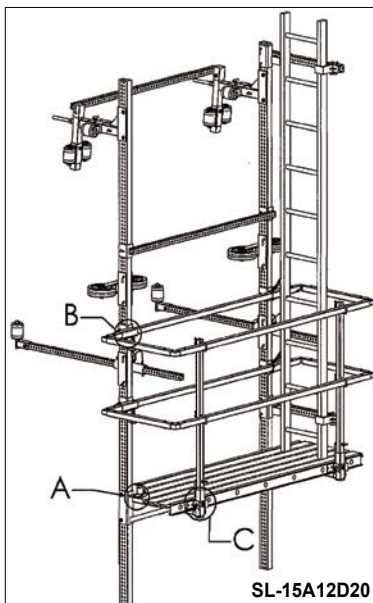
SLH-15A16D24



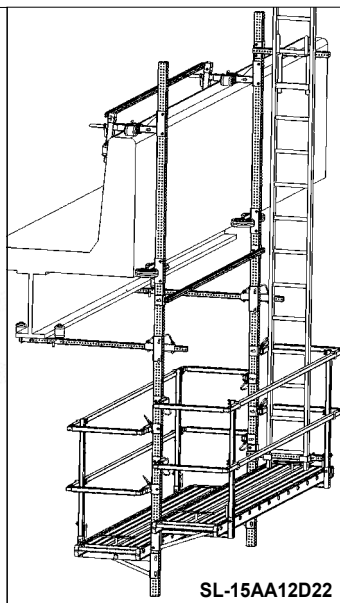
SLH-15X12D20

Parapet Scaffold Models

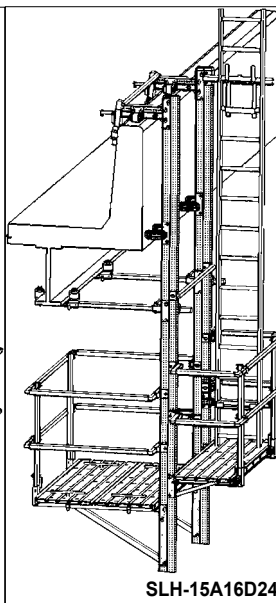
Model	Number of Decks	Scaffold Size (ft)	Stem Size (in)	Stem length (ft)	Wt (lbs)	SWL (lbs)
SL-15A12D20	1	2 X 7	2 X 3	12	350	500
SL-15AA12D20	1	2 X 12	2 X 3	12	402	500
SL-15A12D22	2	2 X 7	2 X 3	12	450	500
SL-15AA12D22	2	2 X 12	2 X 3	12	500	500
SLH-15A16D24	2	(1 ea. 2 X 7); (1 ea. 4 X 7)	2 X 6	16	600	750
SLH-15AA16D24	2	(1 ea. 2 X 12); (1 ea. 4 X 12)	2 X 6	16	650	750
SLH-15A20D26	2	(1 ea. 2 X 7); (1 ea. 6 X 7)	3 X 6	20	903	800
SLH-15AA20D26	2	(1 ea. 2 X 12); (1 ea. 6 X 12)	3 X 6	20	1013	800
SLH-15X12D20*	1	2 X UP TO 40	2 X 6	12	410	750



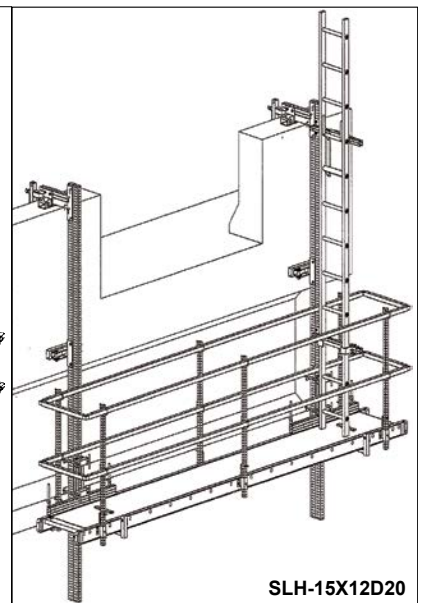
SL-15A12D20



SL-15AA12D22



SLH-15A16D24



SLH-15X12D20

all models equipped with rollers unless stated otherwise
 * stationary parapet scaffold; wheels are optional
 ** ladder not included on any model

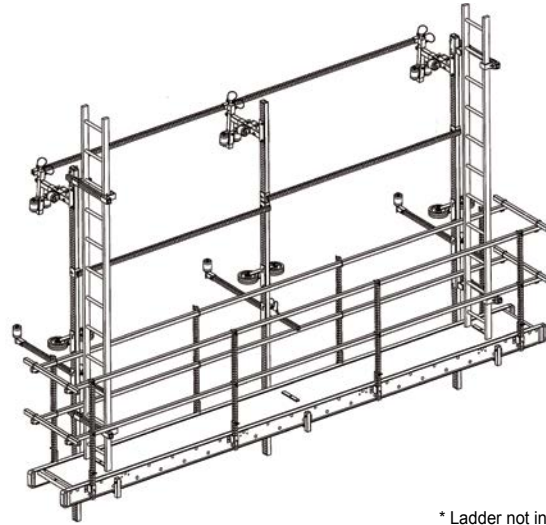


expanded parapet scaffold



The Expanded Parapet Scaffold allows for a longer platform by adding a middle Vertical Stem and replacing the stages with one longer one; in this case, increasing the deck size to twenty feet. Decks may be expanded up to forty feet on three Vertical Stems.

SL-15X320



* Ladder not included

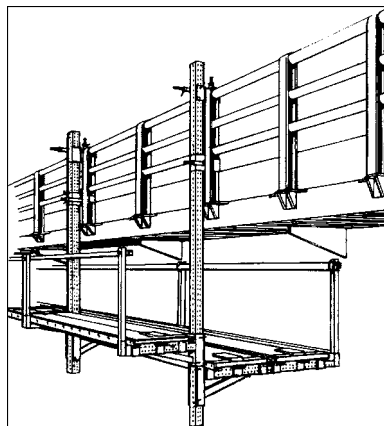
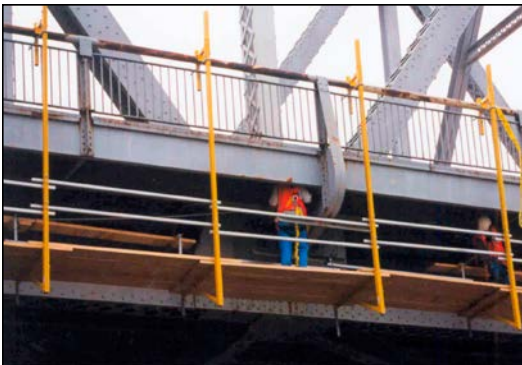
Expanded Parapet Scaffold		Wt	SWL
Model	Description	(lbs)	(lbs)
SL-15X320	2 ft. X 20 ft. Expanded Parapet Scaffold	980	750

stationary catwalk parapet scaffold

The SL-35AA assembly below is designed as a catwalk system, and is adaptable to most structural bridge rail designs.



SL-35AA



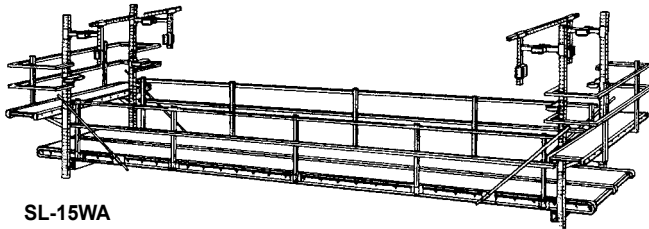
Stationary Bridge Rail Scaffold	
Part	Description
SL-35BRC	Stationary Upper Head Assembly
SL-7016	2" x 3" x 16' V-Stem
SL-24SB	24" Stage Bracket w/Board Locks
SL-48SB	48" Stage Bracket w/Board Locks

* Ladder not included



wrap-around parapet scaffold

The SL-15WA Wrap-Around Parapet Scaffold lets you maximize the efficiency of your work force. Wrap-Around design lets you simultaneously work along both sides of the bridge AND underneath it. Roller Clamps let you reposition the scaffold as work progresses.



SL-15WA

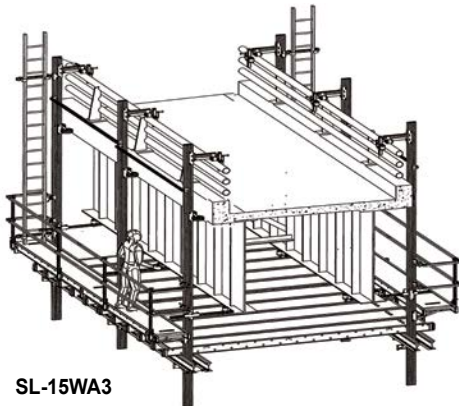
wrap-around parapet scaffold

Model	Access deck size (ft)	Deck width (ft)	Stem size (in)	Stem length (ft)	Wt (lbs)	SWL (lbs)
SL-15WA	2 X 7	to 40	2 X 3	16	900	750

* Ladder not included

expanded wrap-around parapet scaffold

The size of the working area can be significantly increased by adding more components to the Expanded Wrap-Around Parapet Scaffold. Another benefit is to increase the distributed Safe Working Load. This system is truly versatile.



SL-15WA3

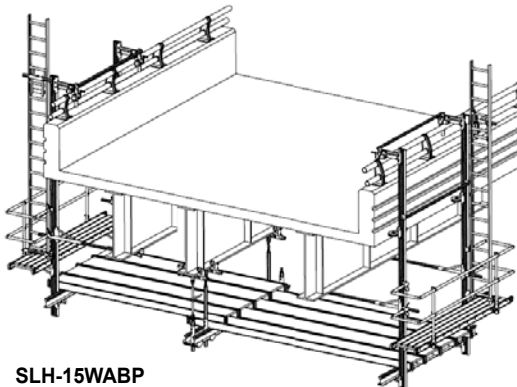
wrap-around parapet scaffold (three vertical stems)

Model	Access deck size (ft)	Deck width (ft)	Stem size (in)	Stem length (ft)	Wt (lbs)	SWL (lbs)
SL-15WA3	2 X 24	to 40	2 X 6	16	1380	750+

* Ladder not included

heavy duty wrap-around parapet scaffold w/connecting by-pass scaffold

When the width of the bridge prevents you from using the standard wrap-around Parapet Scaffold (SL-15WA), just add the intermediate rolling system. When there are floor beams, diaphragms, or other obstructions, include the By-Pass attachments. This system offers strength and flexibility.



SLH-15WABP

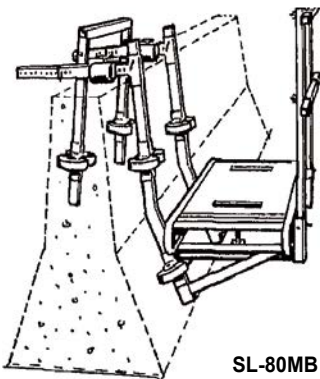
wrap-around parapet scaffold w/connecting by-pass system

Model	Access deck size (ft)	Deck width (ft)	Stem size (in)	Stem length (ft)	Wt (lbs)	SWL (lbs)
SLH-15WABP	2 X 12	40	2 X 6	16	1273	750+

* Ladder not included

median barrier scaffold

The Median Barrier Scaffold provides a rolling platform on the median Jersey barrier from which the worker has access to finishing details on fresh concrete road surfaces. It helps in reducing worker fatigue from hanging over the barrier. The scaffold places the worker approximately 12" to 18" above the roadway.



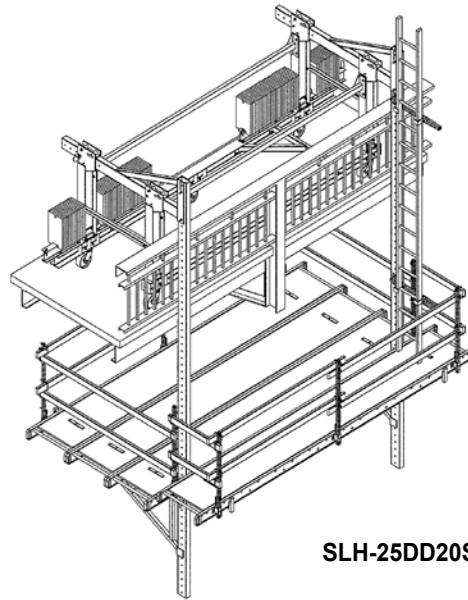
SL-80MB

Median Barrier Scaffold	SL-80MB
Barrier Size (in): 8 - 15 Scaffold Packaged weight (lbs): 160 Scaffold Size (ft): 2 X 7	SWL (lbs): 500 distributed load

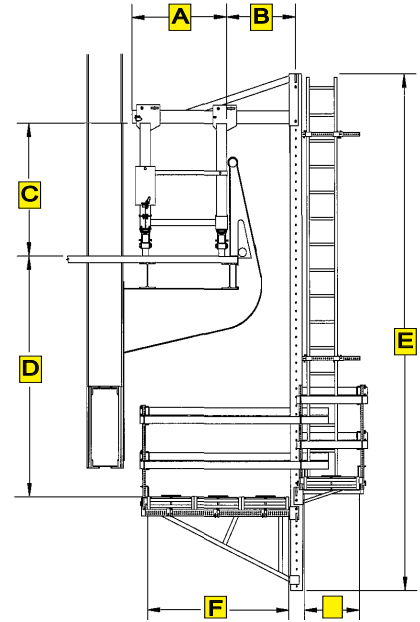


counterweight over-hang scaffold

The Counter-weight Overhang Scaffold is ideal for accessing areas up to seven feet under the bridge from the bridge fascia. A two foot access platform is included.



SLH-25DD20S4

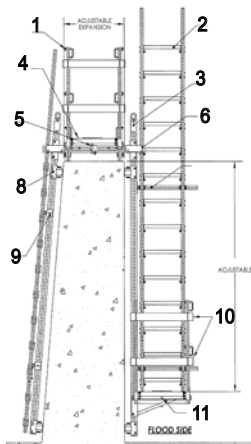
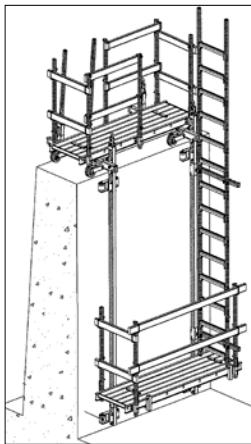


* counterweights not included

counterweight overhang cart scaffold all dimensions (in)										SWL
Model	A	B	C	D	E	F	G	Lgt	Wt*	(lbs)
SL-25DD10S2	55.50	24	63	72	192	24	24	120	2430	500
SL-25DD10S3	55.50	24	63	72	192	72	24	120	2595	500
SL-25DD16S3	50.50	24	62	72	240	56	29	192	2789	800
SLH-25DD20S4	81.00	36	96	72	240	85.5	29	192	3333	800

retaining wall scaffold

The Retaining Wall Scaffold allows for access to the top of the wall and both sides of the wall. Specify the width and length of all decks.



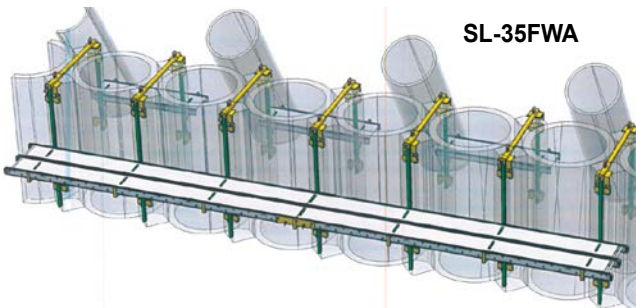
legend	
1	Guardrail Post
2	Ladder
3	Stem w/lifting eye
4	Aluminum Stage
5	Stage Lock
6	Upper Head w/rollers
7	Ladder Clamp
8	Side-Roller Assembly
9	Channel Brace
10	Wood Guardrail
11	Stage Bracket

retaining wall						
Model	Scaffold Size (ft)	no.	Stem Size (in)	Stem Lgth (ft)	Wt (lbs)	SWL (lbs)
SL-712RWS	2 X 7	2	2 X 3	16	322	500

SL-712RWS

flood wall access scaffold

Access modular support brackets on both sides of floodwall cylinder piles for final steelwork and concrete pours. A series of pre-assembled scaffolds, configured for single leapfrog lifts, facilitates increased productivity for final steel rebar placements and intermediate sealing work between piles. The system includes anti-rocking pads, and is adjustable vertically. A single tightening mechanism is included to virtually eliminate what little sway exists in the assembled scaffolds. Standard platform widths are two feet and four feet, with aluminum stage lengths that can match pile center lines. The scaffolds can be engineered to support the contractor's load requirements. Guardrails are included.



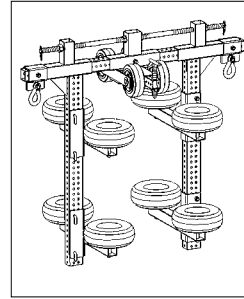
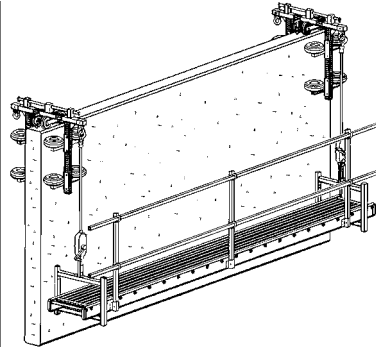
SL-35FWA

flood wall access scaffold				
Model	Scaffold size (ft)	Stem size (in)	Stem length (ft)	wt (lbs)
SL-35FWA	4 X 40	2 X 3	12	868

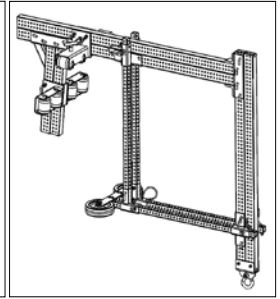


barrier wall scaffold

The rolling Barrier Wall Clamp models are used with other components to create a stable and effective work platform. Add the CHD-101 Stage Hangers, an aluminum stage, guardrail system, and winches to complete the package.

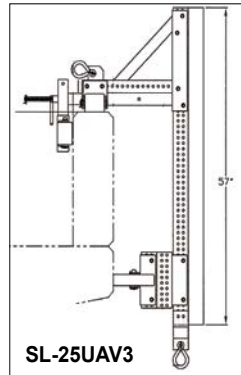


SL-80DHV2



SL-25UAV

Rolling Barrier Wall		Expansion	Width	Weight	SWL
Model	Description	(in)	(in)	(lbs)	(lbs)
SL-80DHV2	Winch Dbl-side Clamp	14 - 24	8.5 - 18	245	1000
SL-25UAV	Extended Parapet Clamp	12 - 36	6 - 18	260	1000
SL-25UAV3	Extended Parapet Clamp	12 - 24	12 - 24	174	1000
SLH-25UAV4	Material Lift Parapet Clamp	24 - 36	12 - 15	581	5000



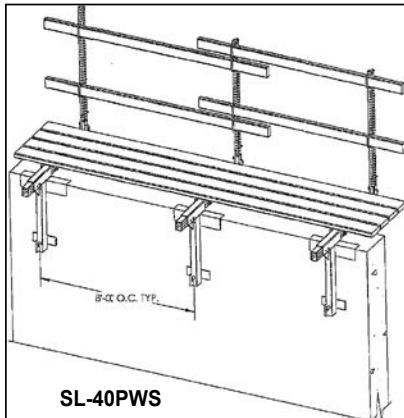
SL-25UAV3



SLH-25UAV4

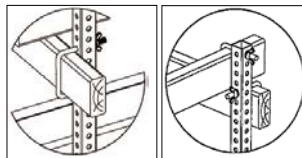
parapet walkway system

The Parapet Walkway System provides a twenty-four inch wide walkway on the top of the concrete parapet. Space the brackets 8 ft. on center, and then used aluminum stages or Scaffold Grade Planks to create a safe and effective platform for the worker.

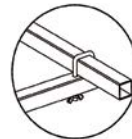


SL-40PWS

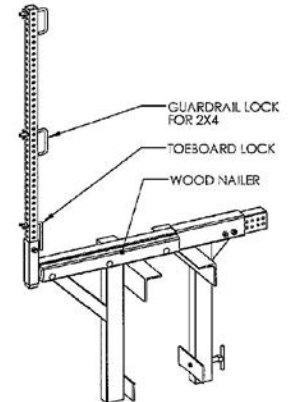
Parapet Walkway System	
Model	Description
SL-40PWS	1 each Parapet Walkway Bracket with Guardrail Post and wood rail locks (2 ea.)
Wt (lbs): 44	Spacing: 8 ft. on center



Wood guardrail (2" X 4") option
Using SL-35D rail lock (for 2 X 4 wood rail)

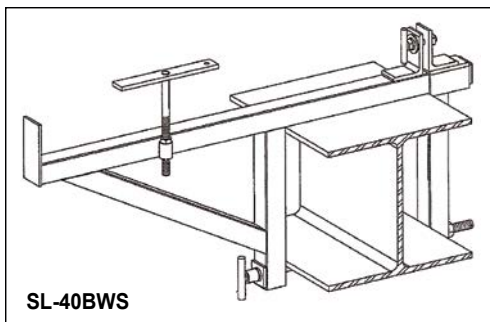


Aluminum guardrail (1.50" sq.) option
Using SL-84GRL3 endrail lock



girder walkway system

The Girder Walkway is adaptable to most structures, including I-beams, chords, and Trusses. Each bracket is spaced 8 ft. on center, with a twenty-four inch wide aluminum stage as the deck. Guardrails are attached to the aluminum walk board.



SL-40BWS

Girder Walkway System	
Model	Description
SL-40BWS	1 each Girder Walkway Bracket with Board Lock
Wt (lbs): 36	Spacing: 8 ft. on center

