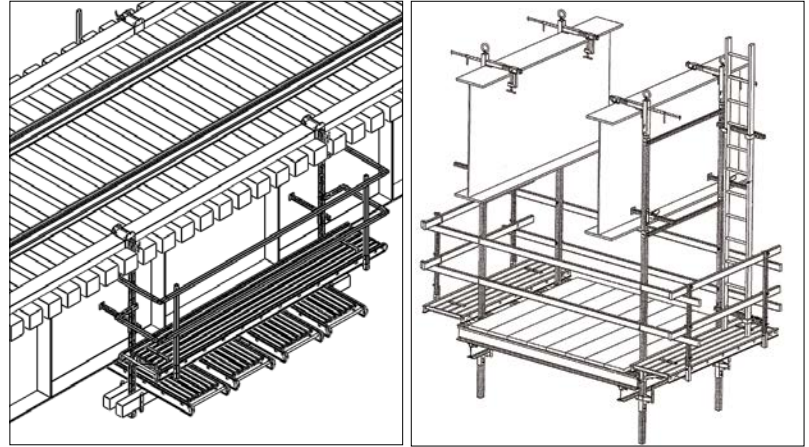
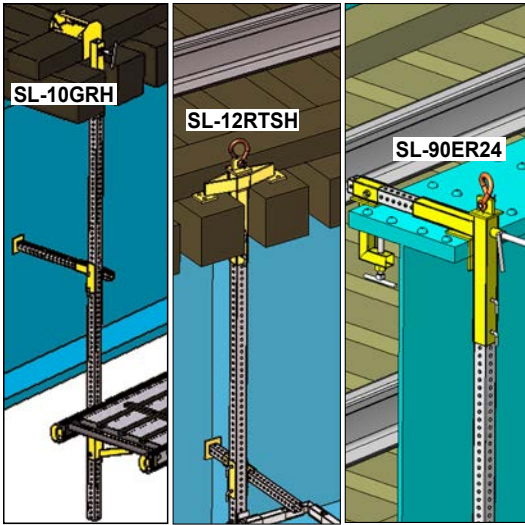


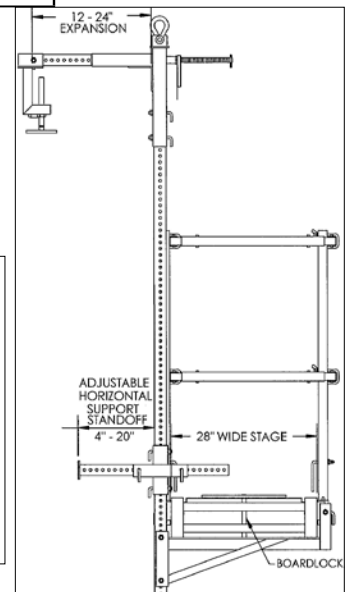
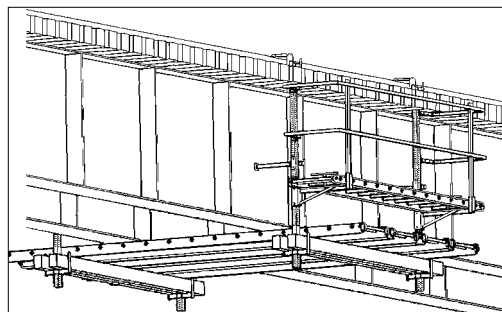
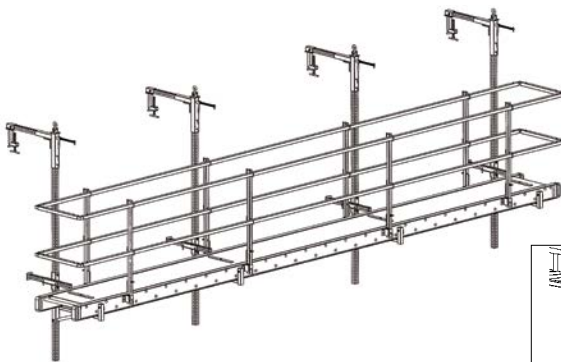
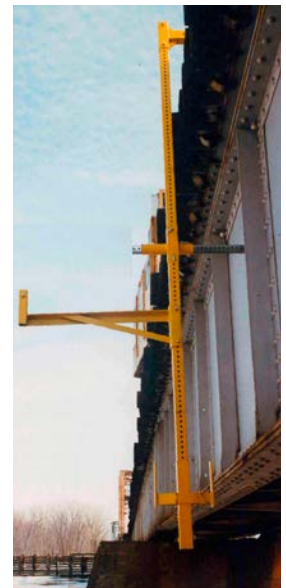
railroad scaffold systems

The standard railroad scaffold system offers three upper head assemblies. Attachments can be made to the guide rail, the rail ties, or the top flange of the steel girder. The height of the scaffold can be adjusted along the vertical stem. Easy access to all areas of the railroad bridge is achieved when the modular components are properly assembled and erected.



Railroad Scaffold System

Top Support	Mid Support	Vertical Stem	Deck Support
Top Girder Clamp: SL-90ER24 1. Attach to structural plate girder 2. 12" - 24" Flange width x up to 5.75" thick 3. Lifting Eye for crane setup	Horizontal Support: SL-1515CA 1. Supports Vertical Stem from web 2. 4" - 20" braced from the web	Vertical Stem: SL-71C96, SL-71C144 2" x 2" x 8' or 12' galvanized perforated, holes 1" on center.	Stage Bracket: SL-28SBB 28" platform width
Guardrail Timber Clamp: SL-10GRH 1. Attach to Guardrail timber 2. Fits Guardrail timbers 8" wide x 4" high 3. Lifting Eye for crane setup	Horizontal Support: SL-1515CA 1. Supports Vertical Stem from web 2. 4" - 20" braced from the web	Vertical Stem: SL-71C96, SL-71C144 2" x 2" x 8' or 12' galvanized perforated, holes 1" on center.	Stage Bracket: SL-28SBB 28" platform width
Rail Tie Drop-Thru Hanger: SL-12RTSH 1. Assembly drops through rail ties 2. Fits minimum opening of 2.75" 3. Lifting Eye for crane setup	Tie Support Mid Brace: SL-12TSB 1. Braces from bottom of tie 2. Adjusts 4" - 8"	Vertical Stem: SL-71C96, SL-71C144 2" x 2" x 8' or 12' galvanized perforated, holes 1" on center.	Hanger: SL-702RRH Support for 4" X 6" wood
Concrete Rail Clamp: SL-35BRC1 1. Clamp to concrete railing 2. 8" - 14" width, 8" fixed fascia standoff 3. Lifting Eye for crane setup	Horizontal Support: SL-1515CA 1. Supports Vertical Stem from web 2. 4" - 20" braced from the web	Vertical Stem: SL-71C96, SL-71C144 2" x 2" x 8' or 12' galvanized perforated, holes 1" on center.	Stage Bracket: SL-28SBB 28" platform width

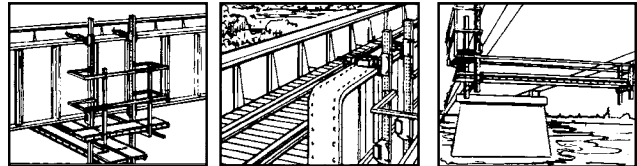


thru-girder wrap-around scaffold

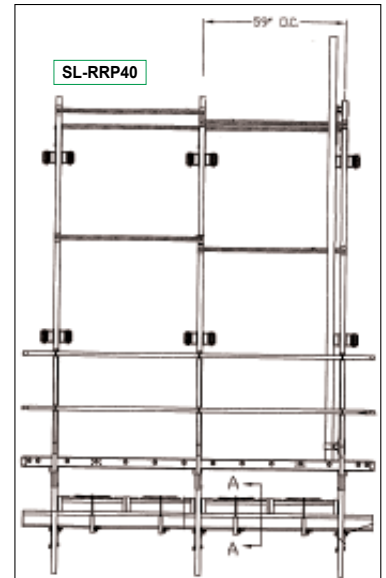
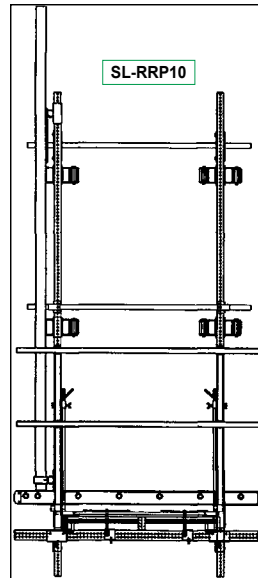


The Thru-Girder Wrap-Around Scaffold is designed to provide access to all sides of a Thru-Girder railroad bridge. The safe working load may be increased by adding vertical stems. The standard two stage (fifty-six inches) cross scaffold reaches up to thirty-nine feet.

Thru-Girder Wrap-Around Parapet Scaffold					
Model	Access Scaffold Size (ft)	Scaffold width (ft)	Stem length (ft)	Wt (lbs)	Distributed SWL (lbs)
SL-RRP10	2 X 7	4.67 X up to 39	16	614	1000
SL-RRP40	2 X 12	9.33 X up to 39	16	938	2000

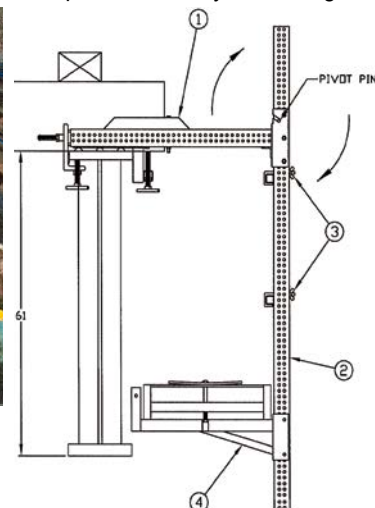


* Ladder not included



extended girder scaffold

The Extended Girder Scaffold provides a safe access to the girder's fascia with a built-in ladder clamp (just supply the ladder). Spaced up to 10 feet apart, the standard 10-foot hinged vertical stem makes it easy for one person to install. This modular scaffold allows increased scaffold length along the structure. Two clamp expansions available: 5"-11" and 12" - 18"; up to 26.5" away from the girder. Aluminum or wood guardrails may be used.



SL-90EGC Extended Girder Scaffold		
Part	Description	Qty
90EGC1-2	Upper Head Bracket 5-18" Exp.	2
SL-7010	2" X 3" X 10' Vertical Stem	2
SL-15AAB-A	10' Adjustable horizontal Brace	2
SL-24SB	24" Stage Bracket w/Bd Lck	2
SL-64DM	Front Mounted Ladder Clamp	1
SL-10AL	10' Aluminum Guardrail	2

SL-90EGC



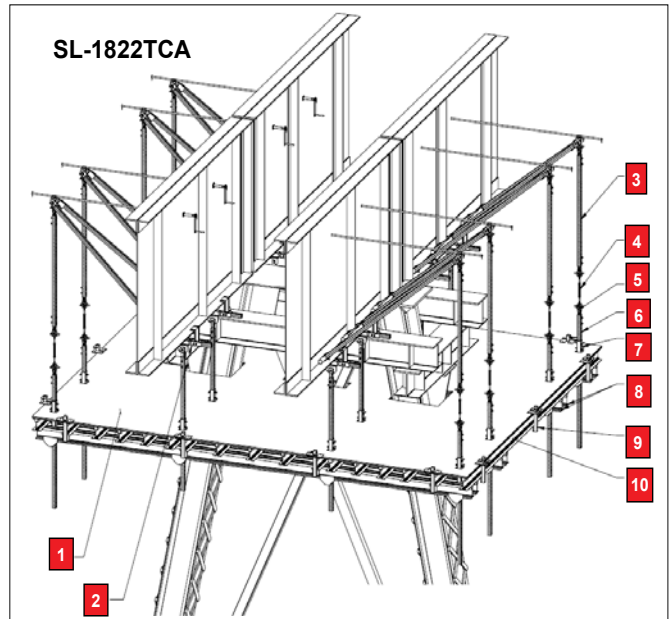
tower cap access scaffold



This suspended scaffold is designed to provide a wide platform for changing out cap plates on railroad bridge tower bents. Main features of this system are:

- Pre-assembled components lifted into place on the girders
- Supported cantilevers with 100 lbs/sq.ft. Safe Working Loads
- "A-Frame" supports that match adjustments of girder supported scaffold components used in raising and lowering the scaffold for cap plate replacements.

A complete system includes aluminum beam structural supports that are spaced to allow for diagonal cross bracing, fire retardant plywood decking with anti-slip safety paint, and wood perimeter guardrails.



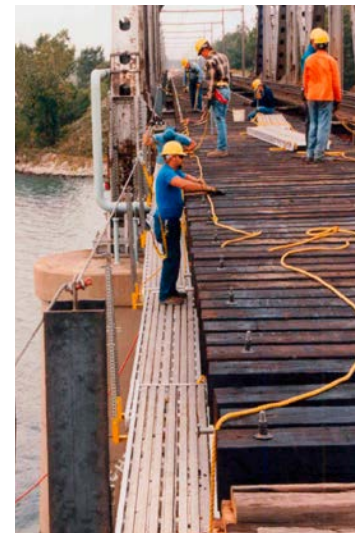
SL-1822TCA Tower Cap Access Scaffold			
Part	Description	Qty	
SL-54DS5A	Beam Clamp, 12-24" Exp., 4k RL, 5.5" Jaw	8	
SL-65CHD20	Clamp Stem Connector, 12k	24	
SL-71CX072	Stem, 2" Sq. X 72", 12k	16	
SLP-71CX12	Beam Support Hanger, 12k	16	
SL-206200A	Angle Brace Support	8	
SL-0921145	Turnbuckle, E&E, .62 X 6	8	
SL-BM650X018	Aluminum Beam, 6.5" X 18' w/plastic nailer	13	
SL-BM650X0220	Aluminum Beam, 6.5" X 22' w/plastic nailer	8	
SL-BM650X008	Aluminum Beam, 6.5" X 8' w/plastic nailer	8	
SL-BM650X0035	Aluminum Beam, 6.5" X 3.5' w/plastic nailer	4	
SL-84ABU	Guardrail Post Adaptor	14	
SL-0929257	Beam Clip & T-Bolt Assembly	320	
Wt: 1840 lbs		SWL: 100 lbs/ sq. ft.	

open deck catwalk scaffold

The Open Deck Catwalk Scaffold is ideal for replacing railroad track ties. Expand the length of the catwalk by adding girder clamps and brackets.

"The railroad industry will benefit greatly...the scaffolding will work on the majority of Open Deck railroad bridges."

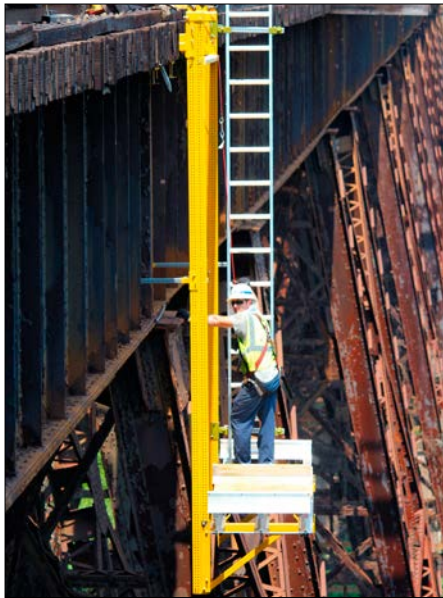
Supervisor of Bridges,
Commuter Transportation District



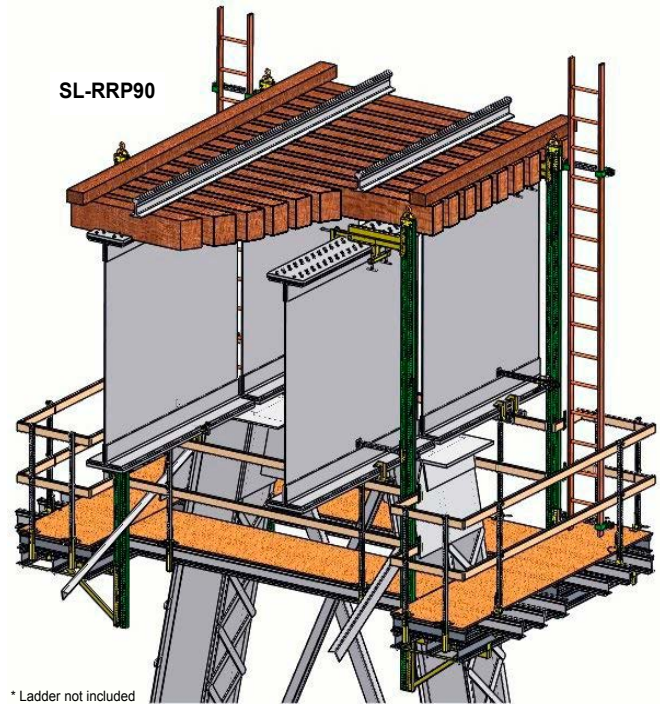
Open deck Catwalk Scaffold	
Part	Description
SL-90ER24	Top Girder Clamp
SL-71C96	Vertical Stem, 8'
SL-28SBB	Stage Bracket
SL-1515CA	Horizontal Support



open deck wrap-around scaffold



The Open Deck Wrap-Around Scaffold is designed to provide access to all sides of a railroad bridge. Fully adjustable in width and height with access ladder clamps, the system may be used in a single side configuration, or as a full wrap-around scaffold.



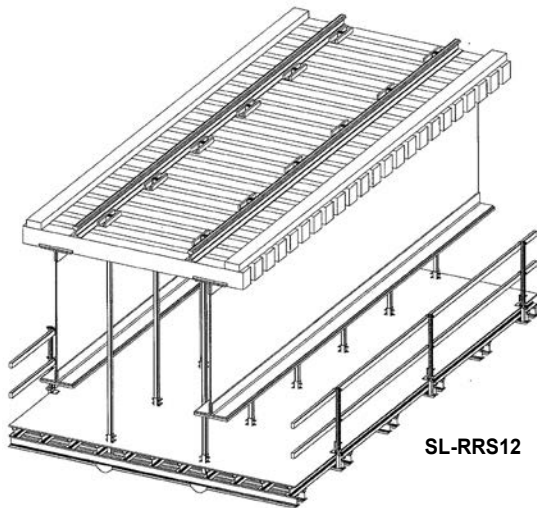
* Ladder not included

Open Deck Wrap-Around Scaffold

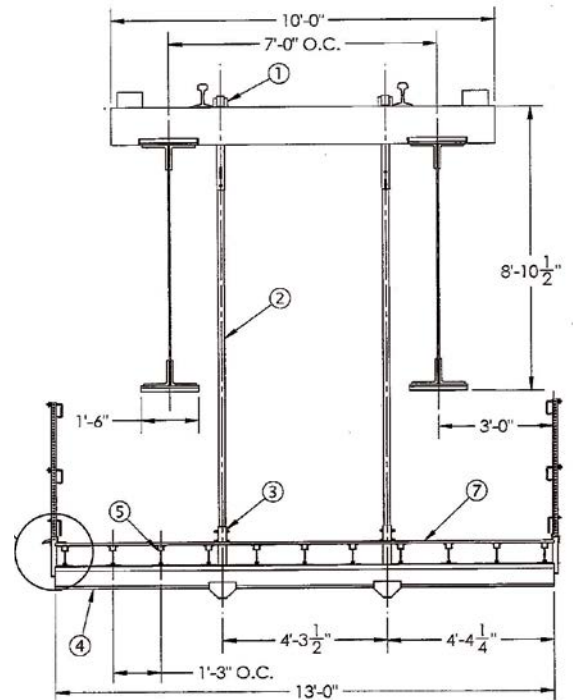
Model	Access Scaffold Size (ft)	Scaffold Width (ft)	Stem Length (ft)	Wt (lbs)	Distributed SWL (lbs)
SL-RRP90	3 X 12	3 X 21	16	1794	2000

heavy duty open deck suspended scaffold

The Heavy Duty Open Deck Suspended Scaffold is a large capacity scaffold designed specifically for changing out rails. The cantilevered deck allows a staging area for the rails to be replaced before removal.



SL-RRS12



*Based upon support spacing. We will provide engineering and drawings.

SL-RRS12 Heavy Duty Open Deck Suspended Scaffold			
Part	Description	Qty	
1	SL-22RTSHHD	HD Rail Drop-Thru Hanger	12
2	SL-71CX144	Stem, 2" Sq. X 12 Ft., 12k	12
3	SLP-71CX12	HD Hanger	12
4	SL-BM750X013	Aluminum Beam, 7.5" X 13' w/plastic nailer	12
5	SL-BM650X021	Aluminum Beam, 6.5" X 21' w/plastic nailer	11
6	SL-84ABAS65	Post Support, Aluminum Beam Side Adaptor, 6.5"	6
7	75-PLYWOOD	4' X 8' X .75 Plywood (not included)	
8	SL-0929259	Beam A-Clamp Assembly, .50" X 1.62" Tbolt/Nut	240
9	SL-71B48GW	Steel Guardrail Post, 48" w/SL-35D & TB Clamp	6
WT: 1449 LBS		SWL 100+ lbs/Sq. Ft. *	



e-train rail scaffold



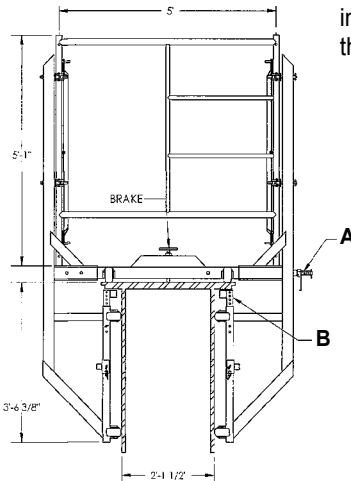
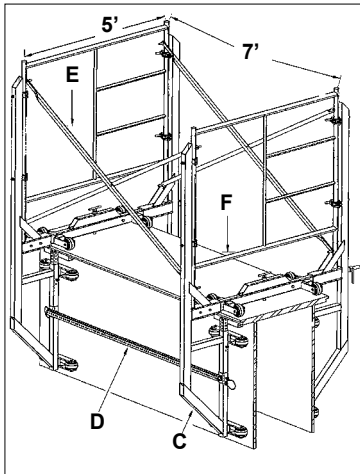
MMK100

Designed to roll on electric train rails. This scaffold is adjustable in width and length, and can be used in tandem. It is a compact and secure maintenance cart that can be enclosed.

Rolling E-train Scaffold (steel)	SL-MMK100
Scaffold Packaged weight (lbs): 361 Scaffold Size (ft): 4 X 8	SWL (lbs): 750 distributed load



monorail scaffold



Designed for rolling on top of a girder or chord, this scaffold system offers adjustability in the platform height and width. Easy installation, easy take down. Adjustable to girder depth and width, the monorail scaffold can be used for many applications.

Rolling Monorail Scaffold (steel)	SL-507MRS
Scaffold Packaged weight (lbs): 355 Scaffold Size (ft): 5 X 7	SWL (lbs): 500 distributed load

SL-507MRS

Legend	
A	Adjustable Expansion Bar
B	Adjustable Anti-Tip Bracket
C	Side Bracket Wheel Assembly
D	Horizontal Brace
E	X-Brace
F	Scaffold Frame

rail tower scaffold



The Rail Tower Scaffold is a rolling and adjustable platform used to access hard-to-reach areas along a rail track. The system comes complete with a fire retardant deck, a fire extinguisher support bracket, an access ladder clamp, and anti-tip locks. This light-weight scaffold can be used in tandem. Cast aluminum wheels are equipped with brakes.

Features

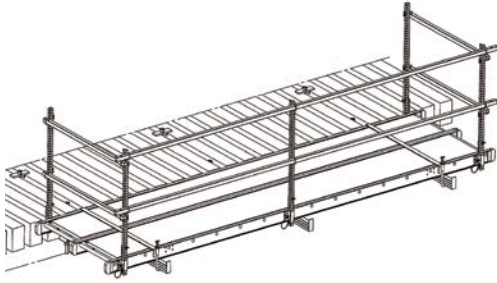
- ◆ Easy Mobility
- ◆ Adjustable height
- ◆ Large Work Area
- ◆ Fire Retardant Deck
- ◆ Access Ladder System
- ◆ Safety Entrance & Exit
- ◆ Anti-Tip Locks
- ◆ May Use In Tandem

SL-0812SPC

Rail Tower Scaffold			
Model	Scaffold Size (ft)	Adjustable Height (in)	Wt (lbs)
SL-0812SPC	7 X 12	114 - 141	1212



open deck cantilever scaffold

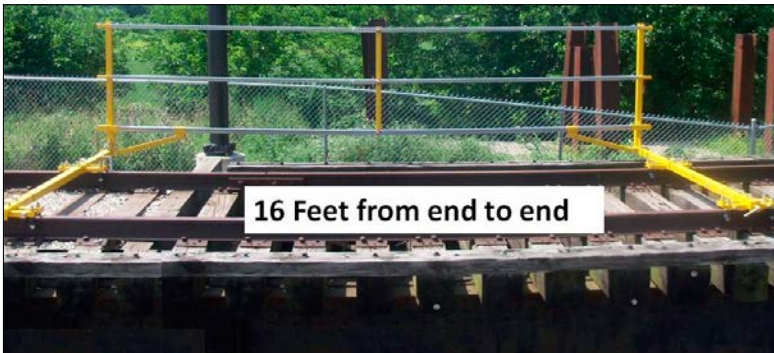


The Open Deck Cantilever Scaffold is used as an escape platform for workers when they need to leave the track area immediately. Determine the scaffold size needed, specify quantity of scaffold support components (items 1-4), then see pages 18 to 19 for aluminum stages and guardrails.

SL-418CRS

Open Deck Cantilever Scaffold	
Part	Description
SL-90EGC4	Girder Supported Truss
SL-90EGC4L	Stage Lock
SL-71B48M	Guardrail Post
SL-84SA	Stage Post Adaptor

track rolling guardrail (double mount)

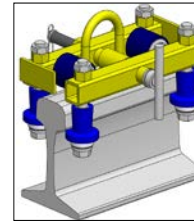


The Rolling Track Guardrail System meets the Occupational, Safety, and Health Administration's (OSHA) standards for fall protection. Designed for the Railroad Industry, the system provides protection for the worker covering a specified area. Expand the protected area by adding more roller stanchions and guardrails.

Track Guardrail System		
Model	Description	Wt (lbs)
SL-RTC19RIS	1 set of 2 Rolling Stanchions 16' apart w/ top, mid and bottom rails	335

3 ft. 3 in. cantilever (center of rail out)

SL-RTC19RIS



SL-RTC181P

One person rolling fall protection track clamp

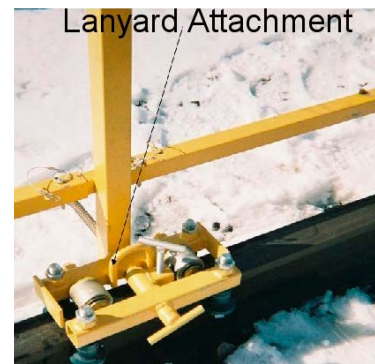
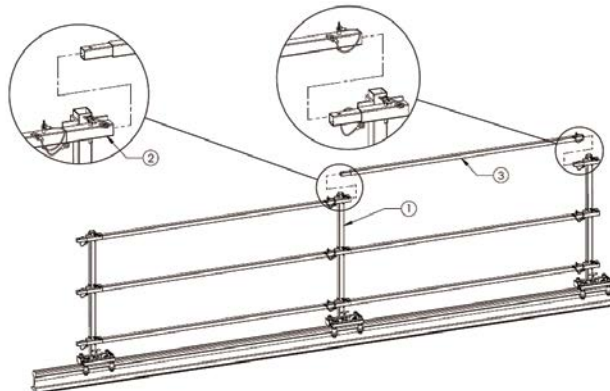
Track Guardrail System		
Model	Description	Wt (lbs)
SL-RTC181P	1 Person Rolling Rail Clamp	38

track rolling guardrail (single mount)

The Single Mount Rolling Track Guardrail System can be used in tandem. Two workers are supported in each sixteen foot section. A one-worker rolling unit is also available.



Track Guardrail System		
Model	Description	Wt (lbs)
SL-RTC18RIS	1 set of 3 Rolling Stanchions 16' apart w/ top, mid and bottom rails	264



SL-RTC18RIS

