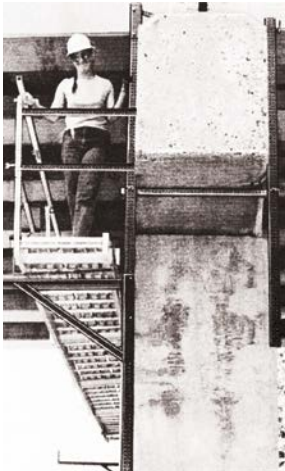
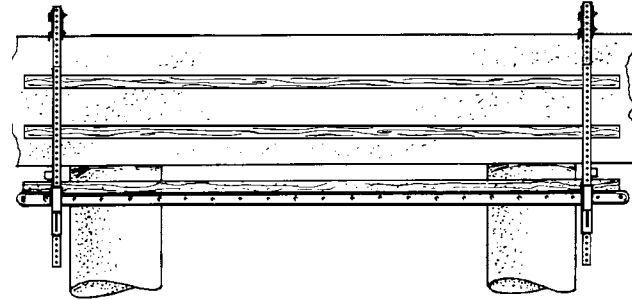
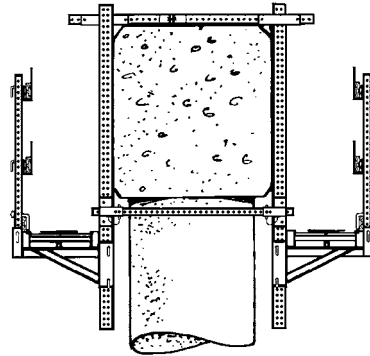


pier cap scaffold

The Pier Cap Scaffold is designed to straddle pier caps at two points or more. Access is provided to all sides of the pier.



SL-20PSE



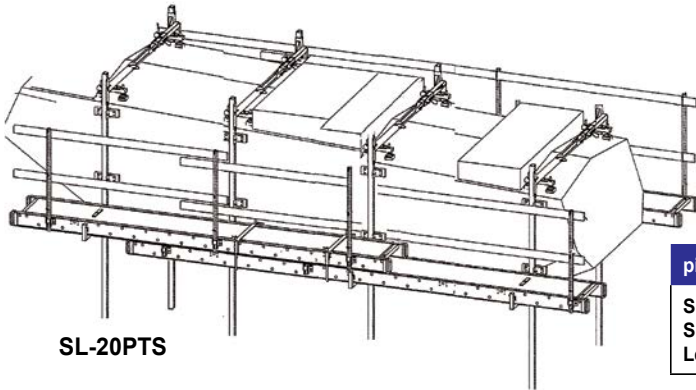
FEATURES:

- * Adjusts from 24" - 48"
- * 8 ft. Vertical Stem
- * 2 ft. wide platform
- * 500 lbs SWL/side; simple span

pie cap Scaffold (saddle style)	SL-20PSE (2 ft. - 4 ft. expansion)
Scaffold Packaged weight (lbs): 346	SWL (lbs): 500/scaffold distributed load
Scaffold Size (ft): 2 X to 32	
Length of Vertical Stem (ft): 8	

pier cap scaffold

The SL-20PTS Pier Scaffold is designed to straddle pier caps at two points or more. Access to all sides is available. Working decks are adjustable for width and length. This model adapts to slopes of eighty-five degrees on the pier cap. The length of the Platform can be increased using the SL-49B Stage Binder to connect and lengthen the aluminum stages.



SL-20PTS

pie cap Scaffold (saddle style)	SL-20PTS (6 ft. - 8.50 ft. expansion)
Scaffold Packaged weight (lbs): 346	SWL (lbs): 750/scaffold distributed load
Scaffold Size (ft): 2 X to 32	
Length of Vertical Stem (ft): 12	

heavy duty pier scaffold

The Heavy Duty Pier Cap Scaffold is designed for Pier/Pier Cap/Pier Column repairs. The system may be configured in a single or double elevation, and maybe fully enclosed, providing a safe and comfortable work environment. The spacing and number of hangers are based on the load requirements.

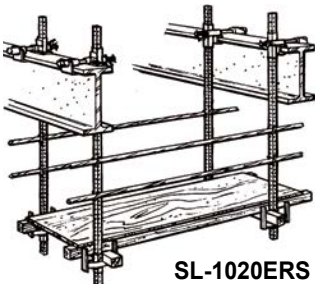


SL-30PSS

Heavy Duty Pier Cap Scaffold SL-30PSS		
	DESCRIPTION	CAT. PAGE
1	girder clamp	51-52
2	safety swivel hook connector	53
3	vertical perforated stem	53
4	hanger & truss	54-55
5	safety rail bolt lock	58
6	decking, guardrails & accessories	56-58

elevated rail scaffold

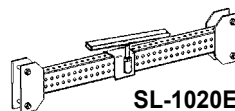
Clamp onto the top flange of bridge girders and create a working deck. An alternate configuration available using aluminum stage. Specify width of desired platform.



SL-1020ERS

Option with hanger for 4" X 6" wood support and plywood decking or aluminum stage.

Elevated Rail Scaffold	SL-1020ERS/SL-1020ERST
Scaffold Packaged weight (lbs): 138	SWL (lbs): 500 distributed load
Scaffold Size (ft): 8 X 8	
Length of Vertical Stem (ft): 6	



SL-1020ERST

Truss option for aluminum stage (shown with stage board lock)

