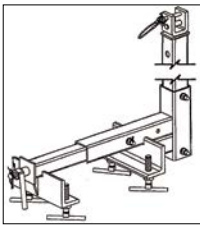
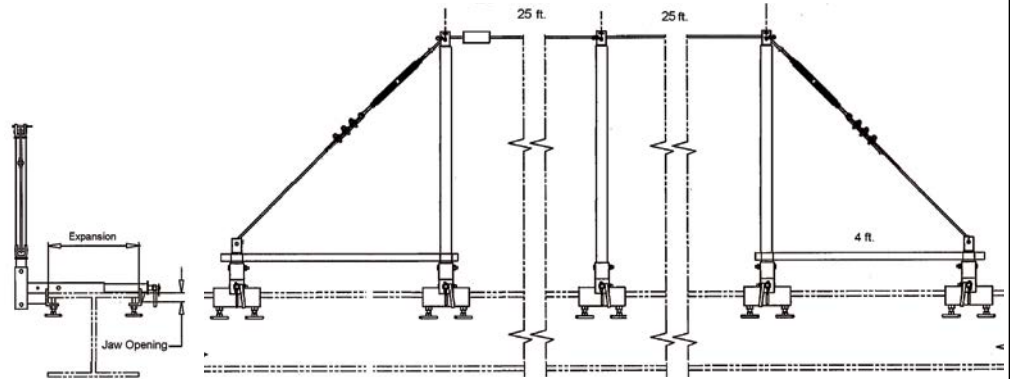
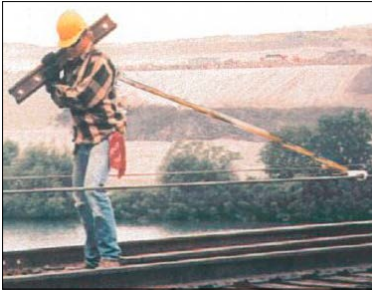
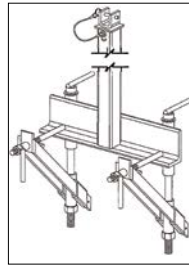


fall protection

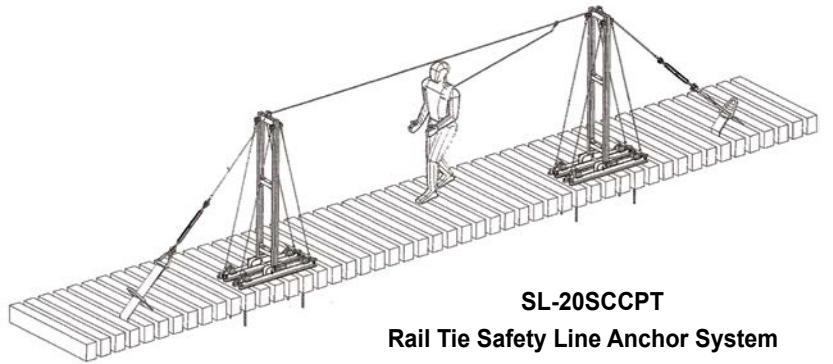
The horizontal fall protection safety line allows attachment of full body harness with shock absorber. The line must be anchored at two hundred foot increments. Configured for the number of workers attached (two within the twenty-five foot spacing, using .50 inch, 6X19 or 6X26 IWRC wire rope. When properly installed, the system meets OSHA standards.



SL-090BSC1



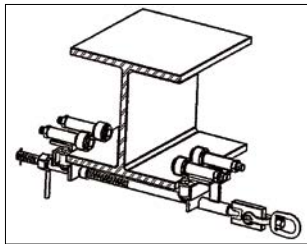
SL-99PSAC



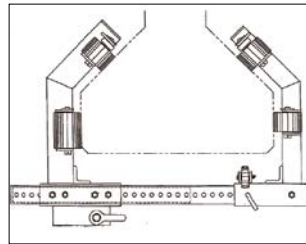
SL-20SCCPT

Rail Tie Safety Line Anchor System

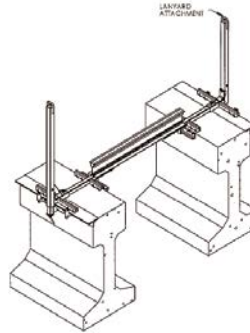
fall protection clamps



SL-99Z
Steel Girder

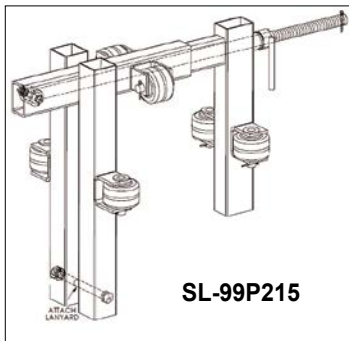


SL-99P4
Concrete Girder

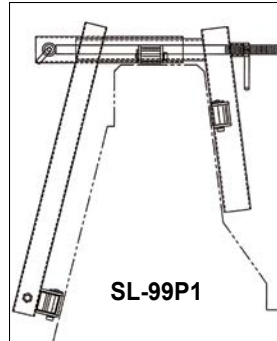


fall protection clamps

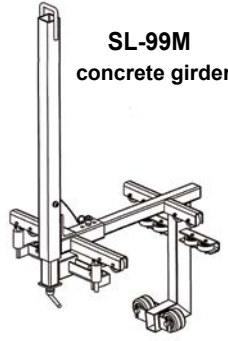
The rolling Fall Protection Parapet Clamps are designed for one to two workers. Attach a retractable shock absorbing life line and the system is complete.



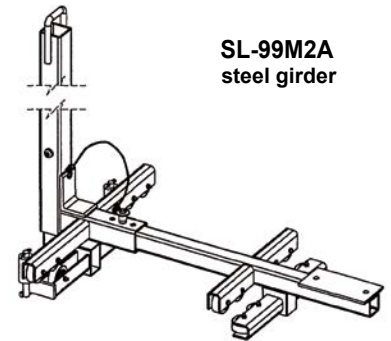
SL-99P215



SL-99P1



SL-99M
concrete girder



SL-99M2A
steel girder

Concrete Fall Protection Clamps

Model	Description	Exp (in)	Persons	deg.	wt(lbs)
SL-99P215	Concrete Parapet Clamp	6-15	2	85/90	62
SL-99P1	Concrete Parapet Clamp	6-15	2	85/90	74
SL-99M	Concrete Girder, Top Rolling	14-28	1	45/64	52
SL-99M2A	Concrete Girder, Top Rolling	14-28	1	90	58

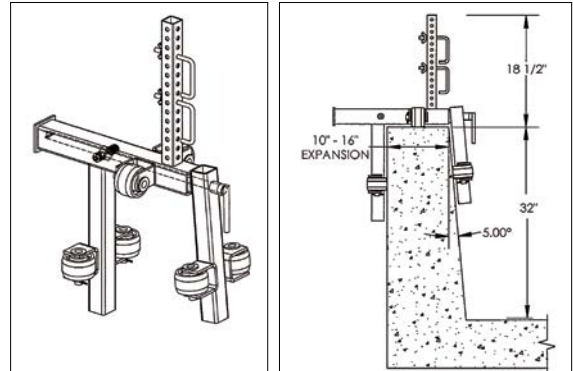


rolling parapet guardrail system



When bridge parapets or guardrails do not meet the Occupational, Safety, and Health Administration's (OSHA) standards for fall protection, Swing-Lo's Rolling Parapet Guardrail System provides a mobile and adjustable answer. Sold in sets of three rollers with adjustable vertical post and locks for two by four wood rails, the system meets OSHA standards. The system may be purchased with or without rollers. The stationary brackets are easily convertible to a rolling system. Spaced eight feet apart, the rolling brackets allow the worker to work within the covered area. Extend the work area by adding more rolling brackets and wood rails.

SL-99PGRS

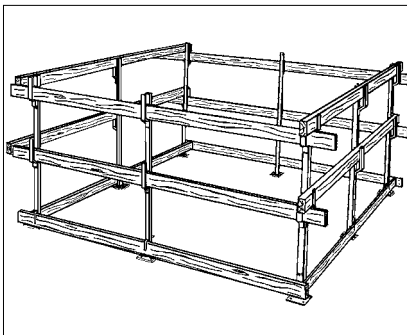


Rolling Parapet Guardrail System

Model	Description	Wt (lbs)	Qty
SL-99PGRS	One set of 3 Rolling Guardrail Brackets 8' apart w/ SL-35D Safetyrail Locks for top and mid rail	48	3
SL-99PGSS	One set of 3 Stationary Guardrail Brackets 8' apart w/ SL-35D Safetyrail Locks for top and mid rail	54	3

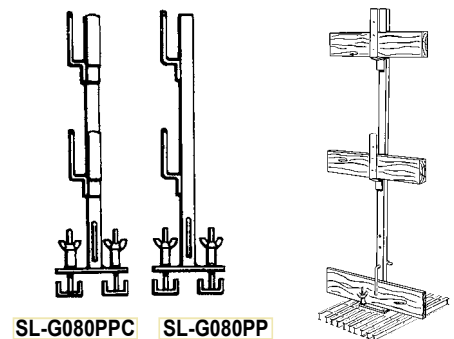
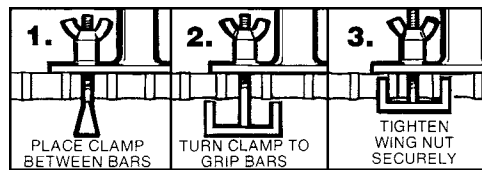
perimeter guardrail - grating floor

The SL-G080PP and SL-G080PPC Guardrail Posts are secured by T-Bolt Locks to metal gratings. Guardrails and Toeboards are then attached to provide an entire Guardrail System that keeps hazardous areas in containment and work crews safe.



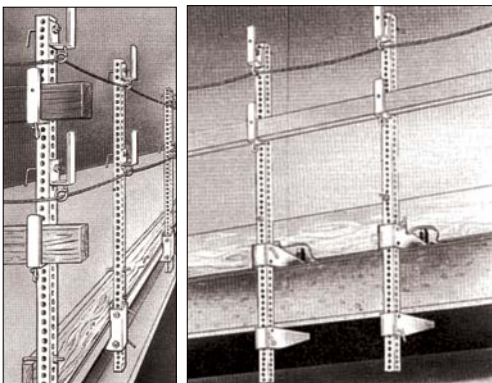
Perimeter Guardrail Post

Model	Description	Wt(lbs)
SL-G080PPC	Corner Grid Post	18
SL-G080PP	Grid Post	15



perimeter guardrail - wire rope

The Perimeter Guardrail System provides a safe and secure protection for the worker in a specified area. This temporary perimeter guardrail system meets OSHA's standards for open areas. Attaching to concrete slabs or other structures is effective and efficient.



Perimeter Guardrail Post

Model	Description	Wt(lbs)
SL-0906P	Static Line Post w/Eye Bolt	12

Perimeter Guardrail Clamp

SL-71B48G	Beam Flange Clamp (Open Beam)	12
SL-090BSC	Beam Static Line Clamp w/SL-0906P Post	18
SL-99B2	Dual Static Line Fall Protection H-Beam Clamp	35

